

# State of Wyoming Corner Record

(In compliance with the **CORNER PERPETUATION AND FILING ACT**, Wyoming Statutes, 1997 Section 33-29-140 et. seq., and the Rules and Regulations of the Board of Professional Engineers and Professional Land Surveyors)

Reverse side of this form may be used if more space is needed.

Record of original survey and citation of source of historical information (if corner is lost or obliterated). Description of corner monumentation evidence found and/or monument and accessories established to perpetuate the location of this corner. Sketch of relative location of monument, accessories, and reference points with course and distance to adjacent corner(s) (if determined in this survey). Method and rationale for reestablishment of lost or obliterated corner.

**G.L.O. RECORD:**

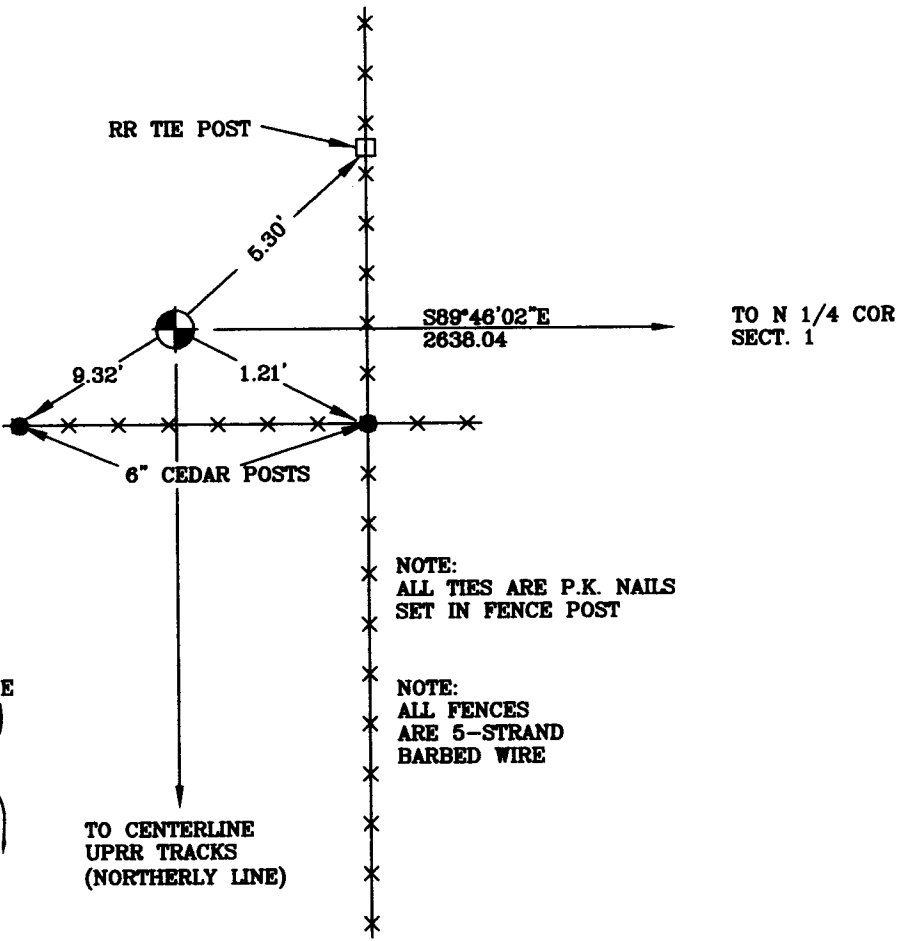
VA.15°27'E FROM THE CORNER TO SECTIONS 34, 35 2 AND 3 RAN S89°51'E ALONG THE SOUTH BOUNDARY OF SECTION 35, 80 CHAINS AND SET A LIMESTONE 24"X18"X8" FOR CORNER TO SECTIONS 35, 36, 1 AND 2



**AT THE CORNER:**

FOUND: A 12"X8"X6" GRANITE STONE WITH 1 NOTCH ON THE WESTERLY SIDE.  
 SET: A 2 1/2" ALUMINUM CAP SET ON A 5/8" X 24" REBAR FLUSH WITH THE GROUND, STAMPED AS SHOWN. BURIED STONE UPSIDE DOWN ON SOUTH SIDE OF REBAR AS WITNESS.

RAILROAD DWG #20798  
 UNION PACIFIC RAILROAD  
 STATION PLAT OF  
 HILLSDALE, LARAMIE COUNTY WY.  
 CORRECTED TO OCT. 1919 "FD  
 GRANITE BOULDER  
 607.5' N OF CL TRACK"  
 MEASURED 605.19' TO  
 FOUND GRANITE STONE



NOTE:  
 ALL TIES ARE P.K. NAILS  
 SET IN FENCE POST

NOTE:  
 ALL FENCES  
 ARE 5-STRAND  
 BARBED WIRE

Date of Field Work: 9/13/2005

Office Reference: DIERKS

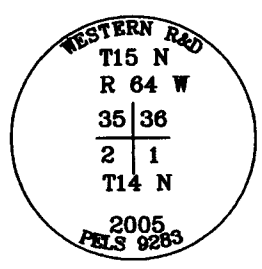
**Cross Index Plat**

	1	2	3	4	5	6	7	8	9	10	11	12	13	14	15	16	17	18	19	20	21	22	23	24	25	
A																										
B	+	+	+	+	+	+	+	+	+	+	+	+	+	+	+	+	+	+	+	+	+	+	+	+	+	+
C	+	6	+	5	+	4	+	3	+	2	+	1	+													
D	+																									
E	+																									
F	+																									
G	+	7	+	8	+	9	+	10	+	11	+	12	+													
H	+																									
I	+																									
J	+																									
K	+	18	+	17	+	16	+	15	+	14	+	13	+													
L	+																									
M	+																									
N	+																									
O	+	19	+	20	+	21	+	22	+	23	+	24	+													
P	+																									
Q	+																									
R	+																									
S	+																									
T	+	30	+	29	+	28	+	27	+	26	+	25	+													
U	+																									
V	+																									
W	+																									
X	+	31	+	32	+	33	+	34	+	35	+	36	+													
Y	+																									
Z	+																									

Firm/Agency, Address  
Western R&D, Ltd.  
5809 Yellowstone Rd., Suite B  
Cheyenne, Wyoming 82009

Telephone Number: (307) 632-5656

● Denotes Monument Set



This corner record was prepared by me or under my direction and supervision.

SEAL & SIGNATURE



Corner Name NW Section 1, T 14 N, R 64 W, 6th P.M.  
 County: LARAMIE Wyoming

Cross-Index No.: A-21

SBRPEPLS/PLSW: March 1994; PLSW January 1998